



MASTEN BRAKE SYSTEMS CO.,LTD
masten.com.tr





Our company has been established earlier 70`s in Istanbul Turkey as a repair shop. We began make improvements on standard brake performance. Due to growing demands on our products we converted our repair shop into a small workshop.

Our success in aftermarket business, attracted OEM company and we began joint venture projects with OEM customer such as FORD, ISUZU and OTOKAR.

After gaining OEM experience in Turkey, we carried our know-how to SAF Holland Axles (Germany) and Axle Tech Inc. (USA). Since 2010, we started our operations in China to be more competitive and cost effective. With our existing capabilities and know-how, well organized facility and outstanding quality test laboratory we achieved to manufacture leading industry product. Since we moved our production to China, MASTEN was born as incorporated company.

We are well aware that importancy of manufacturing safety parts.

Quality, Continuity and Competitiveness is key to success.
WIN-WIN-WIN : for customers, for vendors and for us.

**WE
BELIEVE
IN**



180 Nm

PRODUCT CATEGORY



Service Brake Chamber



D/D Brake Chamber



Disc Brake Chamber



Under Development



Disc Brake Pad



Brake Shoes



Bus



Large-scale Bus



Heavy Truck

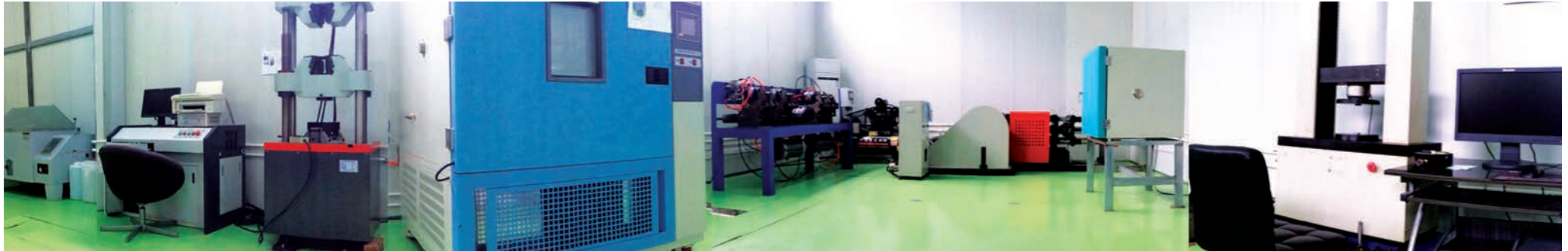


Light Truck

Market Served

Our products served in: Large-scale Buses | Heavy Trucks | Buses | Light Trucks

LABORATORY



Since our company founded in August 2013, along with the promotion of production capacity, and increase of inspection item about needs of parts production the size and strength of laboratory is growing constantly. Meanwhile we communicate and cooperate with outside actively, established fluent cooperative relationship with National Quality Supervision and Inspection Center for wind power equipment Yancheng Quality Supervision and Inspection Center for products, Yancheng Measurement Center Shanghai SGS Suzhou CTI. We constantly add advanced test equipment, work hard on new technique research and create to keep advanced. Our laboratory will be strict to raw material checking, quality testing and analyzing job to ensure quality of products, to promote stabilized development of our company.

Tests We Conduct

Spring Fatigue Test

Brake Chamber Fatigue Test

Continuous Application Test

Port Strength Test

Corrosion Resistance Test

Durability Test

Burst Test

Diaphragm Return Force

References



TEST EQUIPMENTS



Spring Fatigue Test Machine
(Type: TLS-TPJ20)

The equipment is used for test the fatigue life of our company's all kinds of springs.

Max testing force 20kN.

Maximum length: $\leq 580\text{mm}$

Test frequency: 1-5Hz

Amplitude: $\pm 100\text{mm}$



Microcomputer Control Tension & Compression Test Machine
(Type: TLS-W20000) :

The equipment is used for test the data of stroke and force when spring is compressed or stretched.

Range of test force: 2000N-20000N.

Indication error: $\leq \pm 1\%$.



High Temperature Constant Temperature Test Chamber
(Type: KLHG-4090):

This equipment is mainly used for baking, drying and heating test of samples

Temperature range: 100-400 Celsius

Tolerance: $\leq \pm 2$ Celsius.

Follow GB/T2423.2-2001 test B: high temperature test method standard.



Salt Spray Corrosion Test Chamber
(Type: KLSP-200A):

The equipment is used for test the corrosion resistance of parts surface treatment or coating.



The friction material testing machine
(Type: XYC-A)

The equipment is specially used for test friction of friction materials. Applied to inertia bench test of friction materials or friction test before vehicle test, or filter formula of new friction materials; And also can be used to control the quality during producing to make sure the consistency of different production batches of the same formula.



Constant speed friction test machine (Type: XD-MSM)

This test machine can be used to test the friction coefficient (μ) and wear rate (V) of brake pad, clutch facings for automobiles, drilling rig brake block and all kinds of non-metallic friction materials like Industrial mechanical friction plate and Motorcycle brake piece.



Rockwell Hardness Tester
(Type:HR-150A)

The equipment is mainly used to test hardness of raw material and parts.

Hardness range : HRC 20~70
Test force: 588.4N~1471N



Brake Chamber Fatigue Test Machine

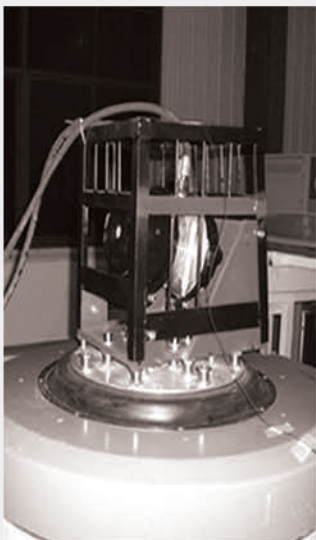
This equipment is used for durable performance simulation test of brake chamber.



Spring Crack Test Machine
(Type CJHZ-3000)

This equipment is used for crack detection for coil spring

Equipment produce standards:
GB3721-83 JB/T8290-1998
GB/T15822.1~3.



Vibration Test

High-frequency vibration table frame fatigue test and other endurance test.

Vibration range is from 10g to 35g.



Micro Computer Controlled Electro-Hydraulic Servo Universal Testing Machine

This equipment is mainly used for stretch, compress, shear, bend test of metal and nonmetal material.

Max testing force:300kN
Measurement range: 2%-100%Fs
Maximum tensile space: 500mm
Maximum compression space: 400mm



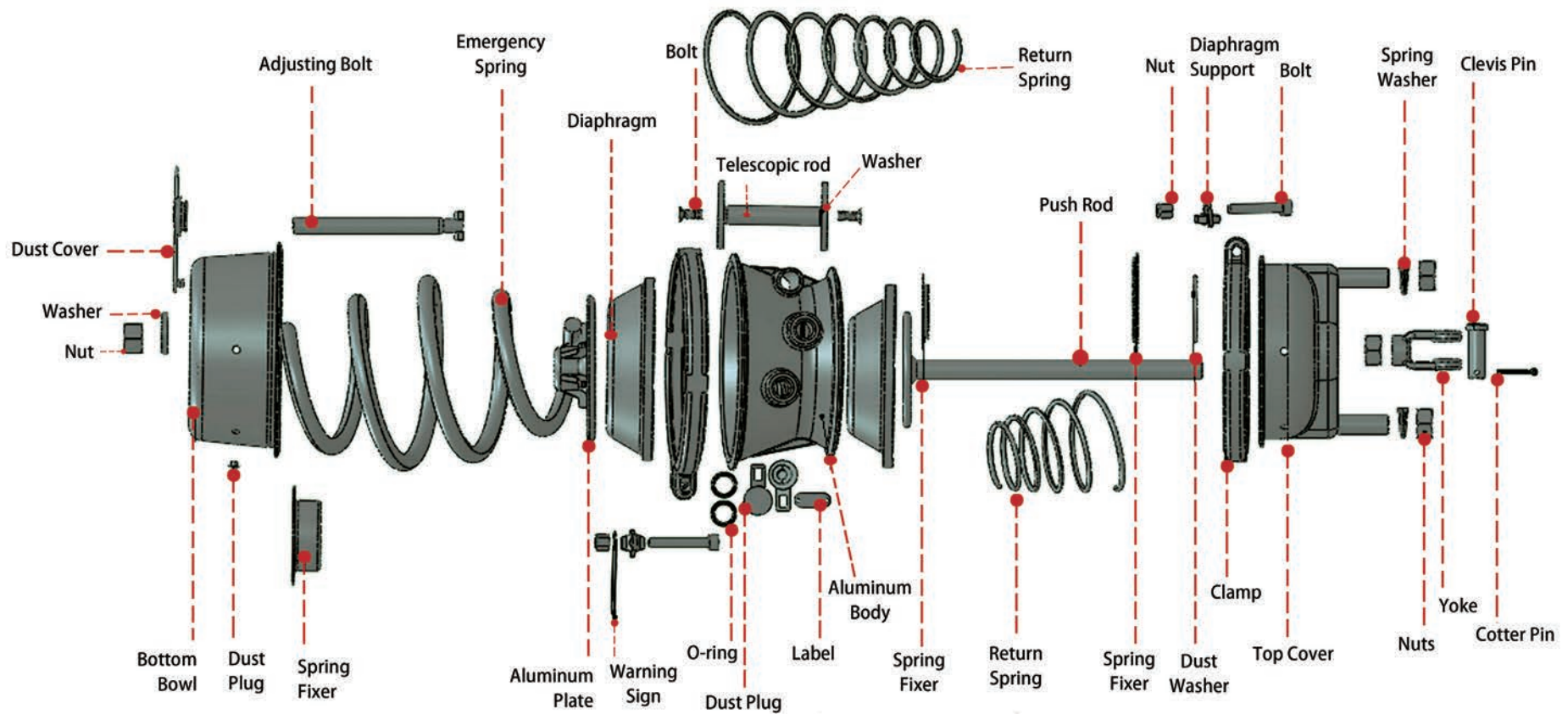
Temp. and Humid. Environmental Chamber

Type: KLT-4100
The equipment is used for testing the reliability of parts or aggregates in high, low, constant and alternate temperature and humidity environment.
Temperature range:-40C to 150 Celsius
Humidity range: 20-98%RH (20~85 celsius)

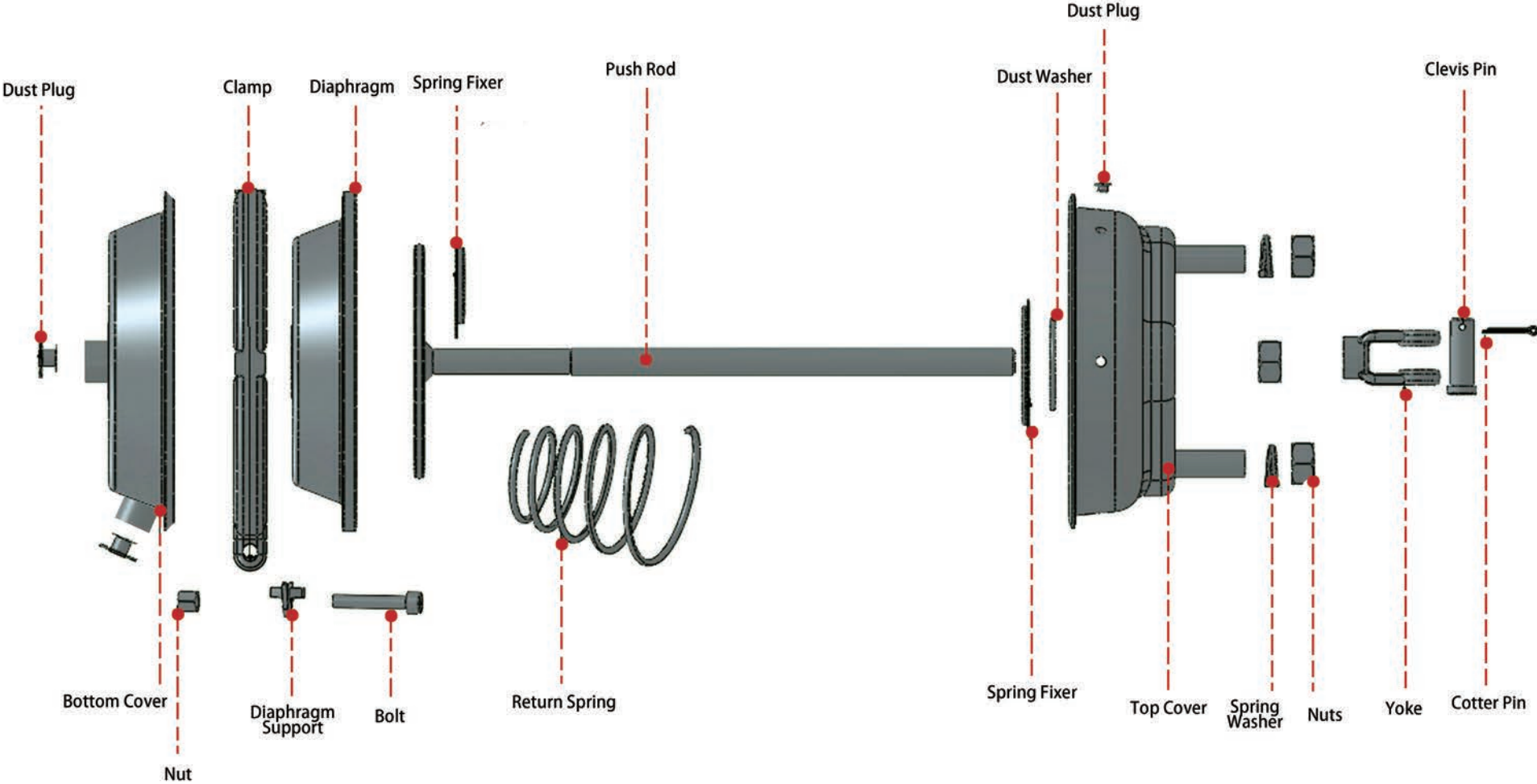
Follow:
GB/T 2423.1-2008 test A:Low temperature test method
GB/T 2423.2-2008 test B:High temperature test method
GB/T2423.3-2006

test Ca: Con- stand hot and humid.

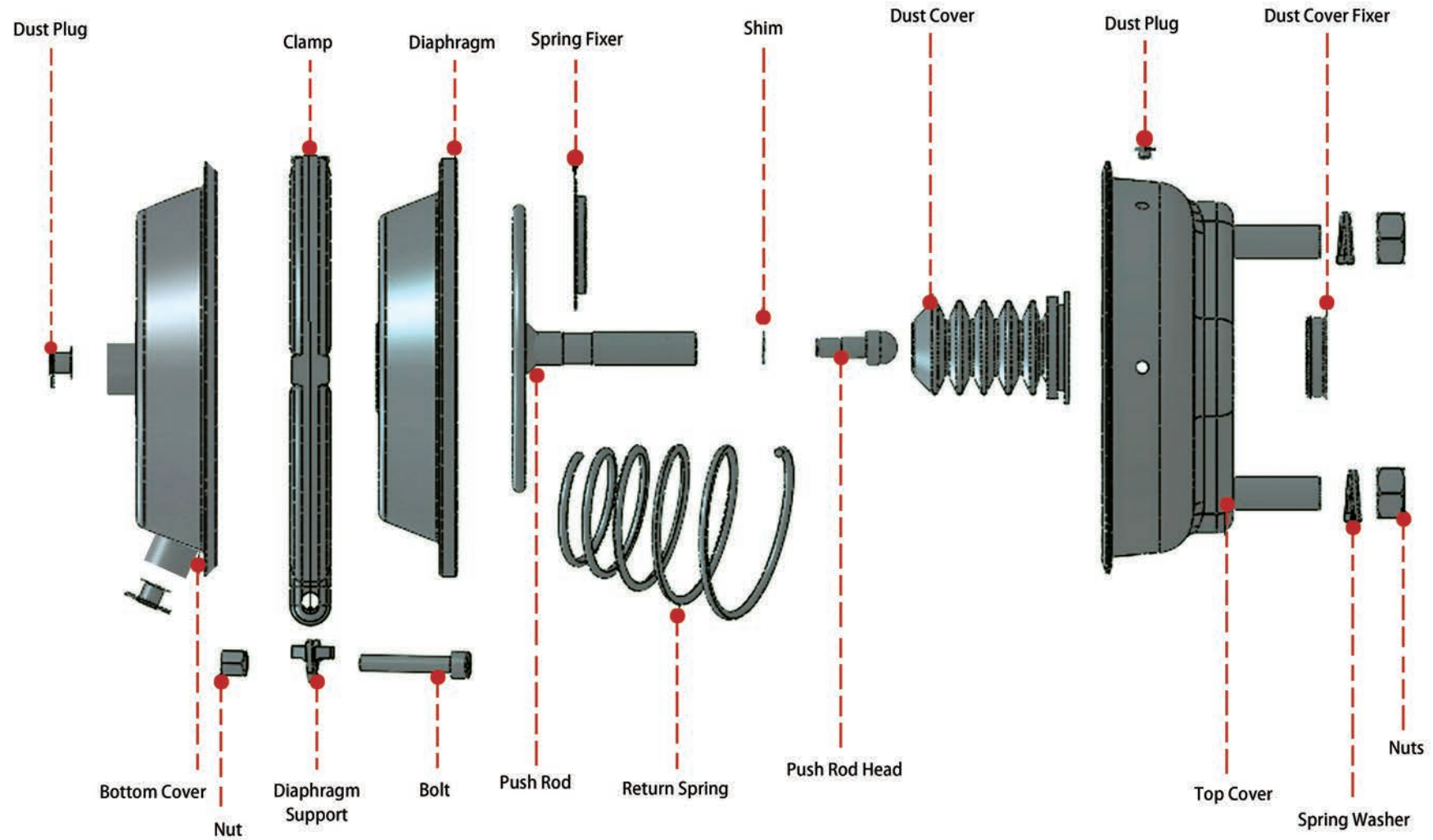
D-D BRAKE CHAMBER



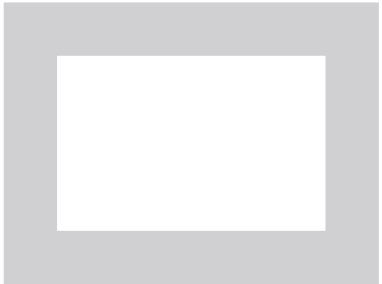
SINGLE BRAKE CHAMBER

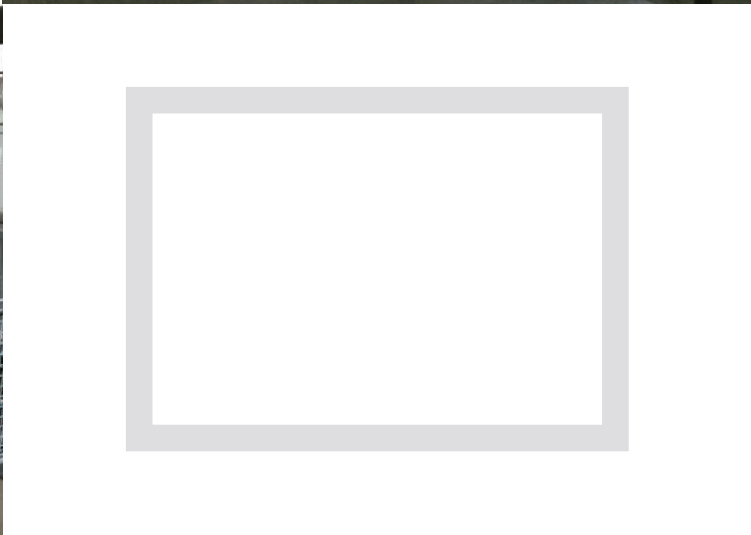
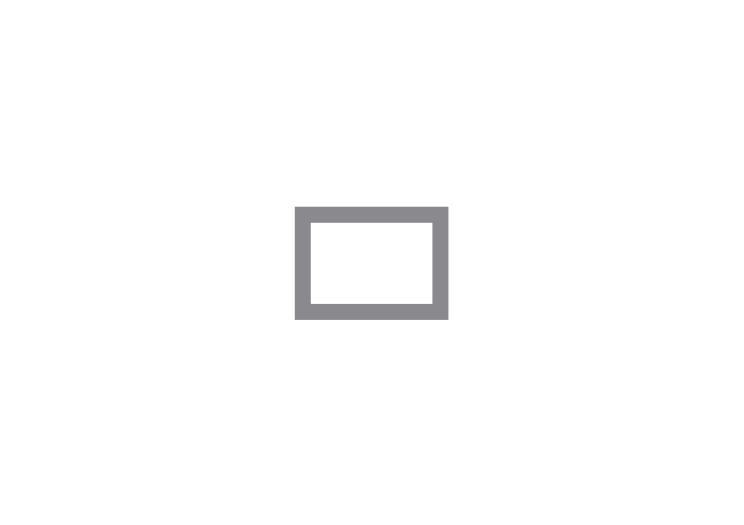


SINGLE DISC BRAKE CHAMBER



WORKSHOP







Turkey Head Quarter and
R&D Department

Yancheng Factory

Shanghai Sales Office

MASTEN BRAKE SYSTEMS CO., LTD

Turkey HQ and R&D

Address: Nakiye Elgun Sok. No:39 Osmanbey Istanbul / Turkey P.C. : 34380

Phone : +90 212 231 36 61

Fax : +90 212 231 71 67

Yancheng Factory

Address: No:10 Quanchuang Road, Touzao Industrial Park, Tinghu District, Yancheng City, Jiangsu / CHINA

Phone : +86 515 8832 8395-6

Fax : +86 515 8832 8897

Shanghai Sales Office

Address: Room 606, No:228 Zhangyang Road, Pudong Shangahi / CHINA P.C. : 200120

Phone : +86 21 6882 7020

Fax : +86 21 6882 7021



masten.com.tr

